

1.000.000.000

100.000.000

10.000.000

1.000.000

100.000

10.000

2019

2020

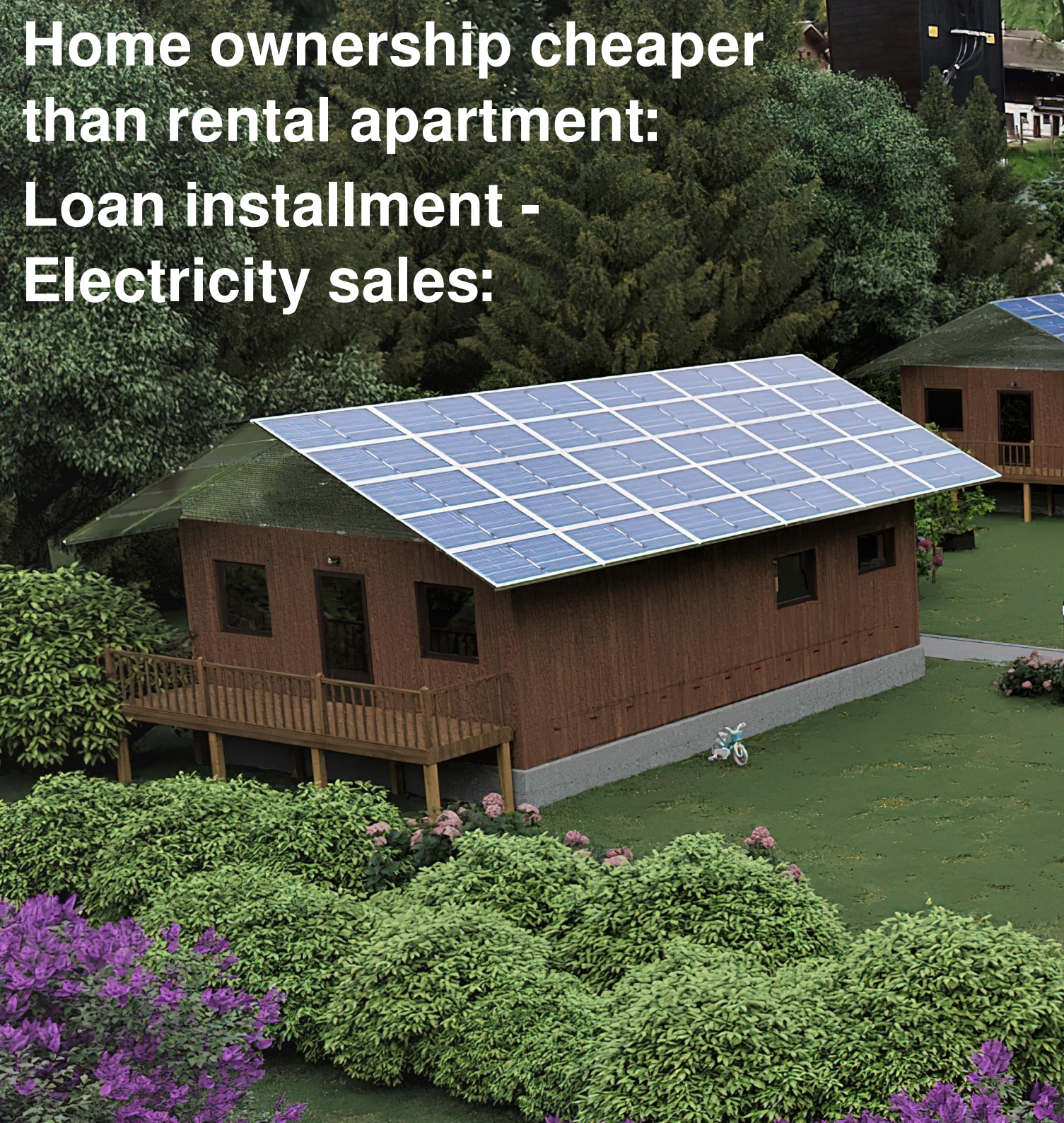
2021

2022

2023

2024

2025



**Home ownership cheaper
than rental apartment:
Loan installment -
Electricity sales:**

Rent

Operating

Costs

Electricity

Fuel for car

Less material used

Inexpensive purchasing

Many innovations

Higher productivity in production

Far superior safety

More comfort

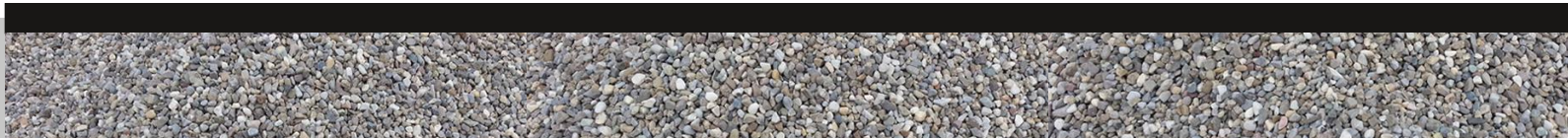
Contemporary price

64 m³ excavated earth removed

95 t of gravel

32 t concrete

Access road must be suitable for heavy trucks.



16 foundation screws at 12 kg makes 192 kg of steel.

Access road sufficient for car with trailer.



Ventilation system with heat recovery and

moisture recovery from exhaust air



More efficiency in heating, cooling and hot water by 3 new patents



ashed at 40km/h

Car security criterion: crash test



MikeRun

Home safety: safe for wind



Justin Hobson

Home safety: Safe in case of fire



Home safety: Safe in case of high water



Steindy

Home safety: Safe in case of earthquake



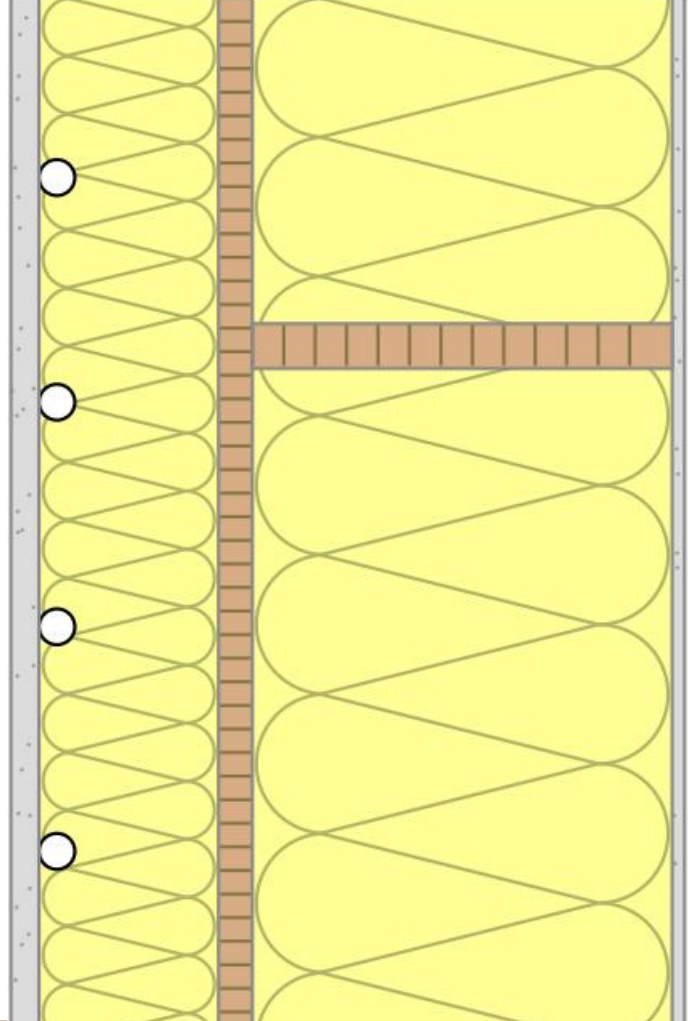
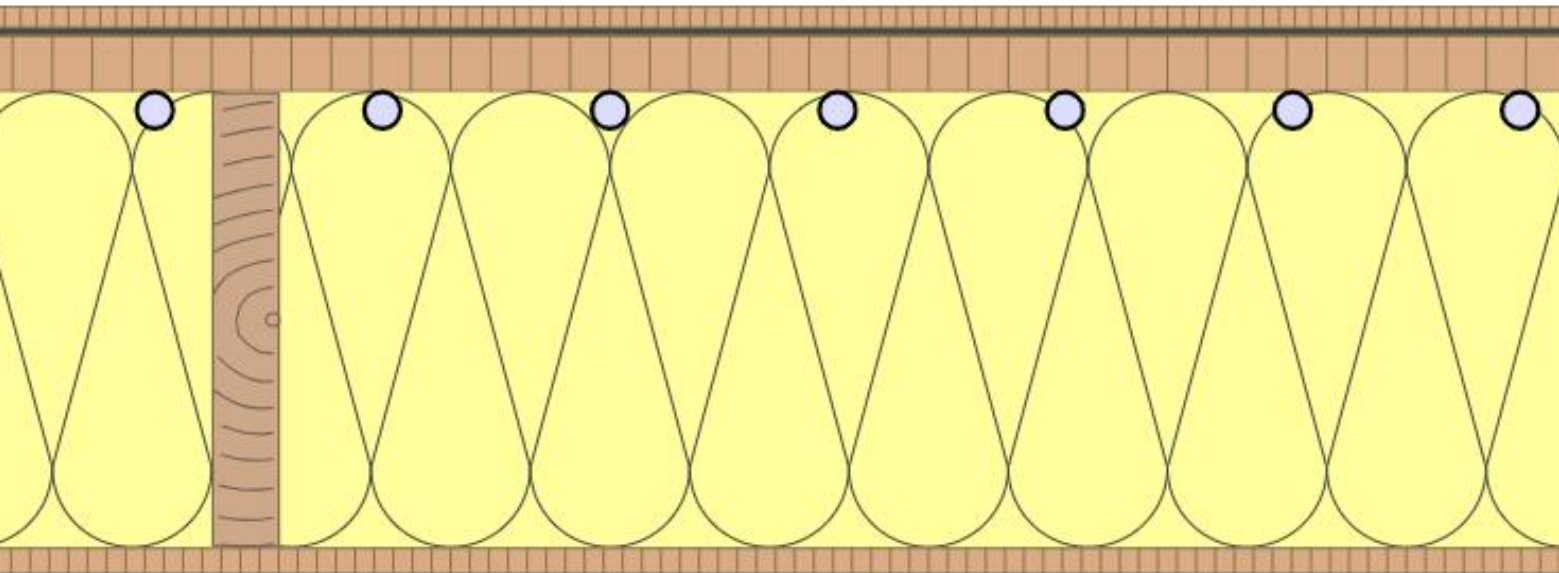
Angelo Giordano

Home safety: Safe in case of power outage

February 2021, freezing storm,
-20°, power grid outage.

It goes without saying that it stays
warm inside, but a GEMINI next
Generation house is still be able
to charge an electric car even
then.

Floor heating and/or wall heating?



Connections as standard for:
Floor heating sidewalks and driveway
Underfloor heating garage
Swimming pool

LPU 67 Premium-Ausführung
mit exklusiver Tor-Innenansicht

LPU 67 premium version
with exclusive door interior view



**Disruption
at houses**

Peter Häll /
Swedish
National
Museum of
Science and
Technology

2.000 €



Redmi Note 11 4G
Snapdragon® 680Pantalla



175 €

Establishment of the joint stock company with € 70,000 capital divided into 10,000 shares

3,000 shares and 65 CA1pmile for the early contributors

7,000 shares and 35 CA1pmile for the founding investors

CA1pmile = certificate of allotment 1 per mille of newly issued shares

[illegible]

What is the effect of this € 70,000 share capital?

Creating a legal structure for further investors.

A team of freelancers is working on projects for the upcoming capital increase.

Finalize prio-patent applications, prepare internationalization of patents.

1	All about the thermal system of the house for room heating, room cooling and hot water. Described in detail in the video: “More efficiency in heating, cooling and hot water through 3 new patents”.
2	
3	
4	The big surprise for the opening ceremony of the model settlement in Unken. Basis for a capital increase into the 9-digit range after the opening ceremony.
5	
6	The wall structure: Very high strength and yet very light and achieve insulation value $u=0.11$ with a wall thickness of only 31 cm.



**Dynamics of goals
and decisions**

